

Maintenance

This topic includes:

- "Cleaning the Outside of the Printer" on page 4-20
- "Cleaning the Density Sensor" on page 4-21

For safety information, go to [Reference/Troubleshooting/User Safety](#) on the *User Documentation CD-ROM*.

Your printer needs little maintenance to keep it producing quality prints. Certain routine maintenance items need to be ordered occasionally:

- Toner Cartridges (Cyan, Yellow, Magenta, and Black)
- Imaging Unit
- Fuser
- Transfer Roller
- Feed Roller Kit

Access the "Supplies Usage Page" from the printer's front panel, from CentreWare IS, or print the "Usage Profile" at the printer's front panel.

Caution

If you attempt to use a non-Xerox toner cartridge, it may not fit properly into the printer. If the cartridge does not fit properly, the printer will be unable to function.

Order extra printer supplies when the printer's front panel displays a warning that the supply is low or near the end of its life. You must replace the supply when the front panel displays an error message that the supply is empty or at the end of its life.

For information about supplies, go to www.xerox.com/officeprinting/6250supplies. Each supply includes installation instructions with the packaging.

Cleaning the Outside of the Printer

You can clean the outside of the printer with a soft, damp, cloth. You can use a cloth moistened with a mild neutral detergent to remove stains; do not spray detergent directly onto the printer.

Warning

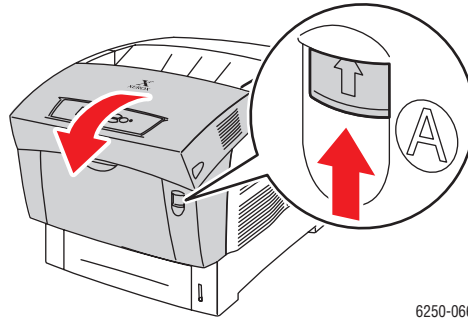
To prevent electric shock, turn the printer off and unplug the power cord from the electrical outlet before cleaning the printer.

Do not use a vacuum cleaner to clean the printer. Do not lubricate the printer with oil.

Cleaning the Density Sensor

The printer has stopped printing because the density sensor is dirty. To clean it:

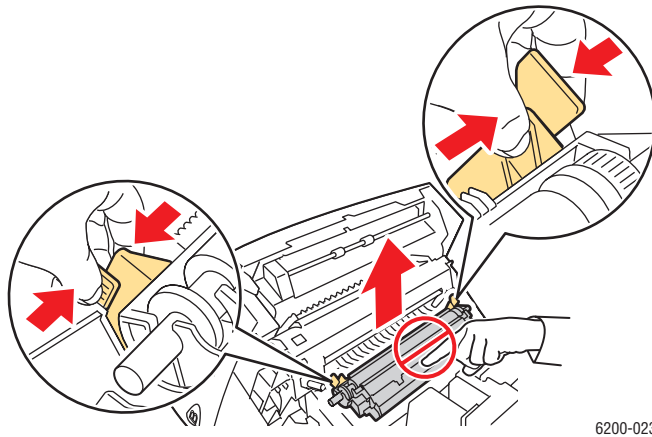
1. Push up the latch on the front of the printer to open Front Door A.



2. Remove the transfer roller. Squeeze together the orange tabs at both sides of the transfer roller and gently lift it out of the printer.

Caution

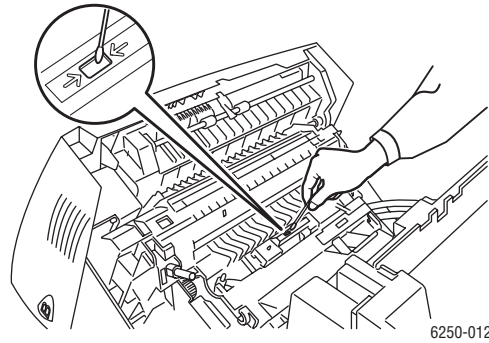
Avoid touching the surface of the roller.



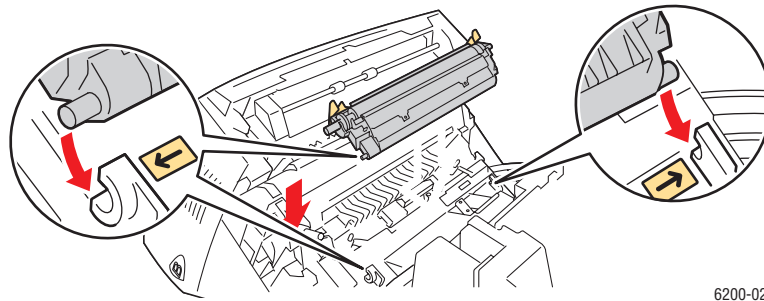
3. Use a dry towel or cotton swab to clean the density sensor.

Caution

Do not use isopropyl alcohol or canned air on the sensor.



4. Reinstall the transfer roller. Insert the rounded ends of the transfer roller into the curved black guides inside the printer. Lock the transfer roller into the printer by pushing down on the orange tabs until you hear a click.



5. Close Front Door A.

